

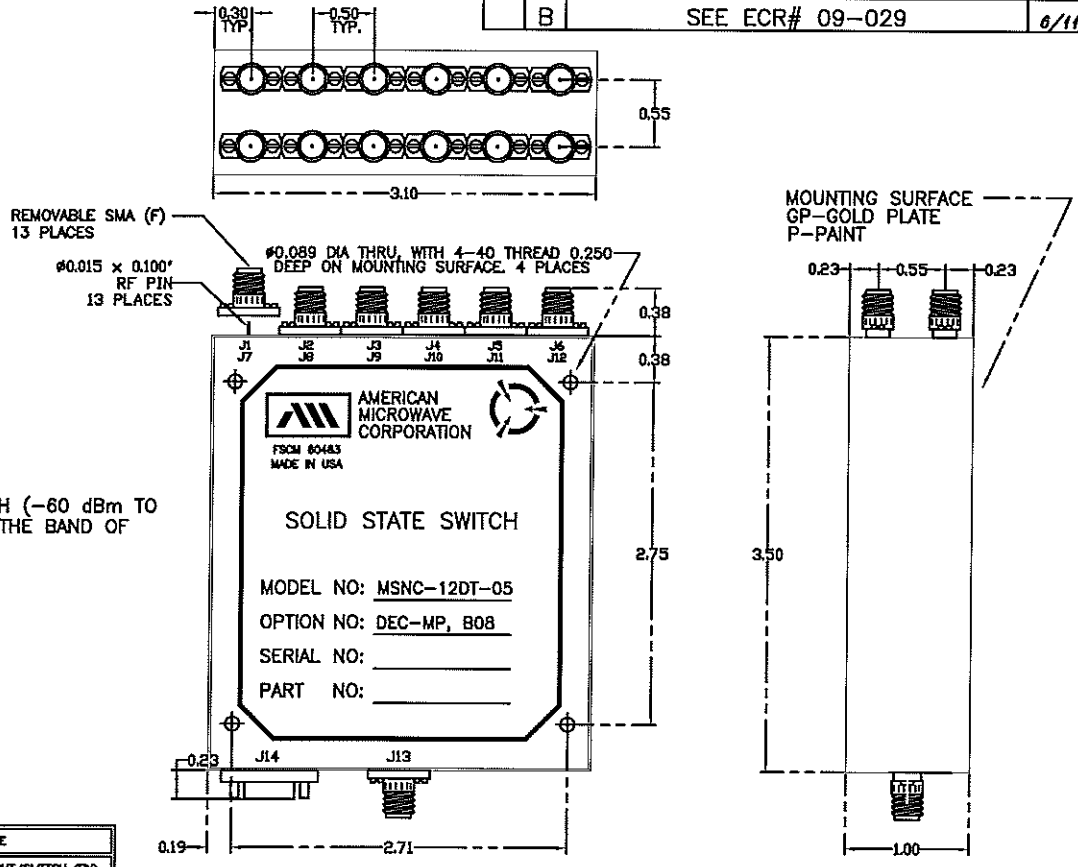
DESCRIPTION:

AMC MODEL MSNC-12DT-05-DEC-MP OPTION B08 IS A SINGLE POLE TWELVE THROW, ABSORPTIVE/NON-REFLECTIVE SWITCH MODULE WITH LOW INSERTION LOSS, HIGH ISOLATION, WITH 4 BIT BINARY CONTROL AND INTEGRAL TTL DRIVER, DESIGNED FOR LOW VIDEO TRANSIENTS AND LOW HARMONIC DISTORTION OVER 50 MHz TO 22 GHz BANDWIDTH.

SPECIFICATIONS:

- FREQUENCY: 50 MHz TO 22 GHz
- INSERTION LOSS: 6.0 TO 7.5 dB
- ISOLATION (ANY PORT): 70 dB MINIMUM
- VSWR (ANY PORT, ANY STATE): .. 2.0:1
- SWITCHING SPEED: <1000 ns (50% TTL TO 10%/90% RF)
- RISE/FALL TIME: <100 ns (10% TO 90% RF) (90% TO 10% RF)
- RF CONNECTORS: SMA FEMALE
- DC POWER SUPPLY: +5V ±10% @ 700 mA MAXIMUM
 -5V ±10% @ 200 mA MAXIMUM
- CONTROL: TTL LOGIC "SEE LOGIC TABLE"
- CONTROL INTERFACE: 9 PIN MICRO D MULTIPIN
- HARMONIC DISTORTION: ≤ 70 dB @ +10 dBm I/P
- FLATNESS ACROSS BAND: ±1.5 dB MAXIMUM, ±1.0 dB TYPICAL (ON STATE)
- VIDEO LEAKAGE: 100 mV PEAK TO PEAK, 20 MHz BANDWIDTH (-60 dBm TO -65 dBm LEAKAGE POWER OR ENERGY IN THE BAND OF INTEREST)
- 1 dB COMPRESSION POINT: +20 dBm
- 2 TONE 3RD ORDER INTERCEPT POINT, POUT OdBm: +35 dBm
- 2 TONE 2RD ORDER INTERCEPT POINT, POUT OdBm: +55 dBm
- 0.1 dB PASS BAND: 50 MHz TO 22.0 GHz
- WEIGHT: 15 OUNCES TYPICAL
- SIZE: 3.10 (L) X 3.5 (W) X 1.0 (H)

REVISIONS				
ZONE	REV.	DESCRIPTION	DATE	APPROVED
-	-	ORIGINAL RELEASE, JOB# 907133E-1	11/08/09	
A	A	SEE ECN# 04-120	09/01/04	
B	B	SEE ECR# 09-029	6/11/09	AK

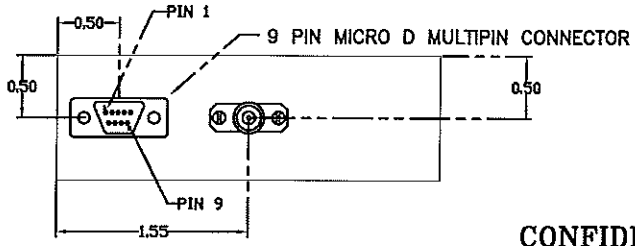


PIN NO.	FUNCTION
1	E1
2	E2
3	E3
4	E4
5	N/C
6	GND
7	+V
8	-V
9	GND

N/C = NOT CONNECTED

TERMINAL LEVEL				OUTPUT/SWITCH QND
E1	E2	E3	E4	
L	L	L	L	J1
H	L	L	L	J2
L	H	L	L	J3
H	H	L	L	J4
L	L	H	L	J5
H	L	H	L	J6
L	L	L	H	J7
H	L	L	H	J8
L	H	L	H	J9
H	H	L	H	J10
L	L	H	H	J11
H	L	H	H	J12

LOGIC L = LOW (0)
 LOGIC H = HIGH (1)



ALL DIMENSIONS ARE IN INCHES
 TOLERANCES:
 X.XX ±0.020
 X.XXX ±0.010

CONFIDENTIAL AND PROPRIETARY

ENVIRONMENTAL RATINGS:

- TEMPERATURE: -10°C TO +55°C (OPERATING)
 -40°C TO +71°C (STORAGE)
- HUMIDITY: 95% OVER TEMPERATURE
- SHOCK: MIL-STD-202F, METHOD 213B COND. B
- VIBRATION: MIL-STD-202F, METHOD 204D COND. B
- ALTITUDE: MIL-STD-202F, METHOD 105C COND. B
- TEMPERATURE CYCLE: MIL-STD-202F, METHOD 107D COND. A

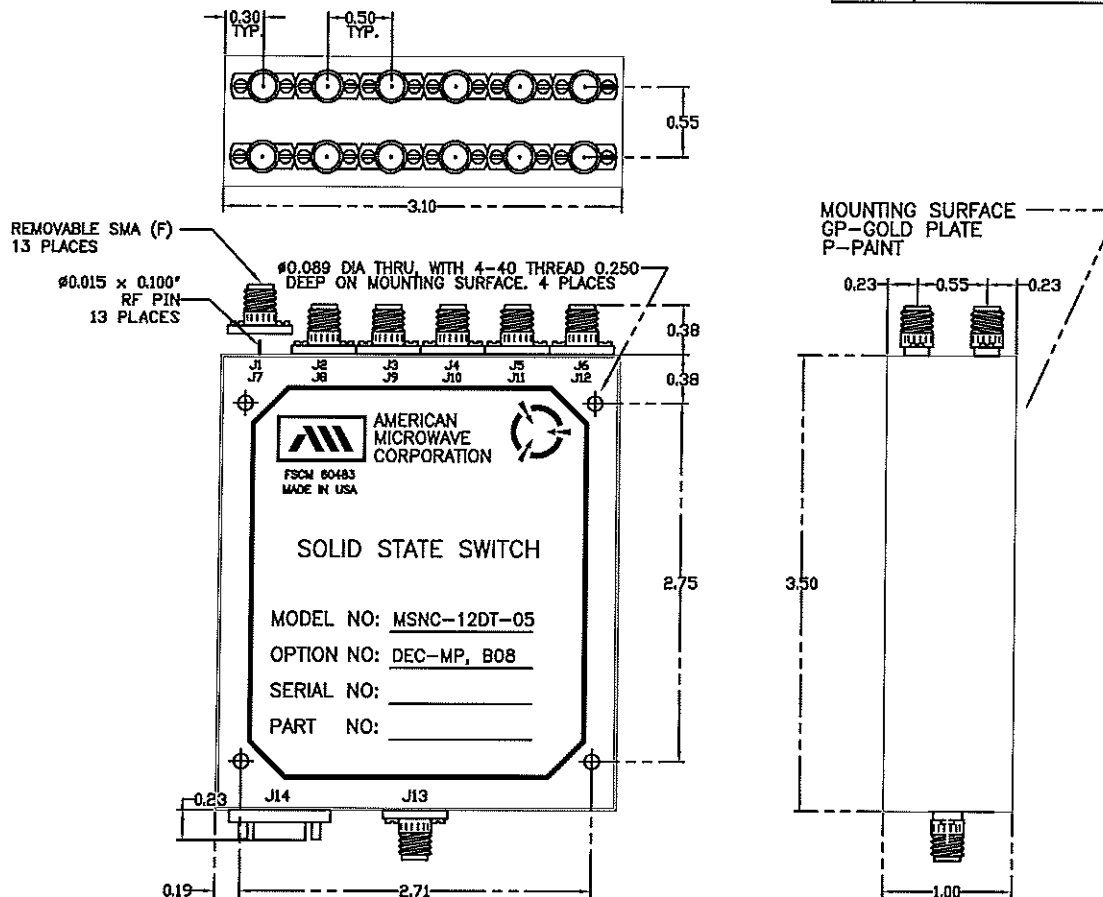
NOTE: THE ABOVE SPECIFICATIONS ARE SUBJECT TO CHANGE OR REVISION

PART NO.		AMERICAN MICROWAVE CORPORATION FREDERICK, MARYLAND		
APPROVALS	DATE	TITLE		
DRAWN <i>WJCS</i>	11/08/09	PRODUCT FEATURE MSNC-12DT-05-DEC-MP OPTION B08 SOLID STATE SWITCH		
MODIFIED <i>898</i>	09/01/04	SIZE	FSCM NO.	DWG NO.
CHECKED <i>AK</i>	6/11/09	A	60483	100-6833
ISSUED		SCALE	N/S	SHEET 1 of 3
				REV. B

DESCRIPTION:

AMC MODEL MSNC-12DT-05-DEC-MP OPTION B08 IS A SINGLE POLE TWELVE THROW, ABSORPTIVE/NON-REFLECTIVE SWITCH MODULE WITH LOW INSERTION LOSS, HIGH ISOLATION, WITH 4 BIT BINARY CONTROL AND INTEGRAL TTL DRIVER, DESIGNED FOR LOW VIDEO TRANSIENTS AND LOW HARMONIC DISTORTION OVER 50 MHz TO 22 GHz BANDWIDTH.

REVISIONS				
ZONE	REV.	DESCRIPTION	DATE	APPROVED
	-	ORIGINAL RELEASE, JOB# 907133E-1	11/06/09	
	A	SEE ECN# 04-120	09/01/04	
	B	SEE ECR# 09-029	6/11/09	<i>pk</i>

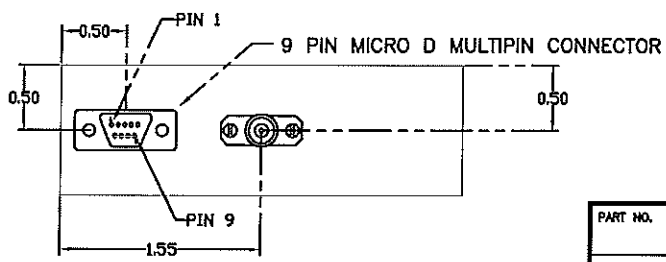


PIN NO.	FUNCTION
1	E1
2	E2
3	E3
4	E4
5	N/C
6	GND
7	+V
8	-V
9	GND

N/C = NOT CONNECTED

TERMINAL LEVEL	OUTPUT/SWITCH GND			
E1	E2	E3	E4	RF
L	L	L	L	J1
H	L	L	L	J2
L	H	L	L	J3
H	H	L	L	J4
L	L	H	L	J5
H	L	H	L	J6
L	L	L	H	J7
H	L	L	H	J8
L	H	L	H	J9
H	H	L	H	J10
L	L	H	H	J11
H	L	H	H	J12

LOGIC L = LOW GND
LOGIC H = HIGH GND



ALL DIMENSIONS ARE IN INCHES
TOLERANCES:
X.XX ±0.020
X.XXX ±0.010

CONFIDENTIAL AND PROPRIETARY

PART NO.		AMERICAN MICROWAVE CORPORATION FREDERICK, MARYLAND	
APPROVALS	DATE	TITLE	
DRAWN <i>WJCS</i>	11/06/09	PRODUCT FEATURE MSNC-12DT-05-DEC-MP OPTION B08 SOLID STATE SWITCH	
MODIFIED <i>EGE</i>	09/01/04	SIZE	REV.
CHECKED <i>pk</i>	6/11/09	A 60483	B
ISSUED		DWG NO. 100-6833	SHEET 2 of 3
SCALE N/S			